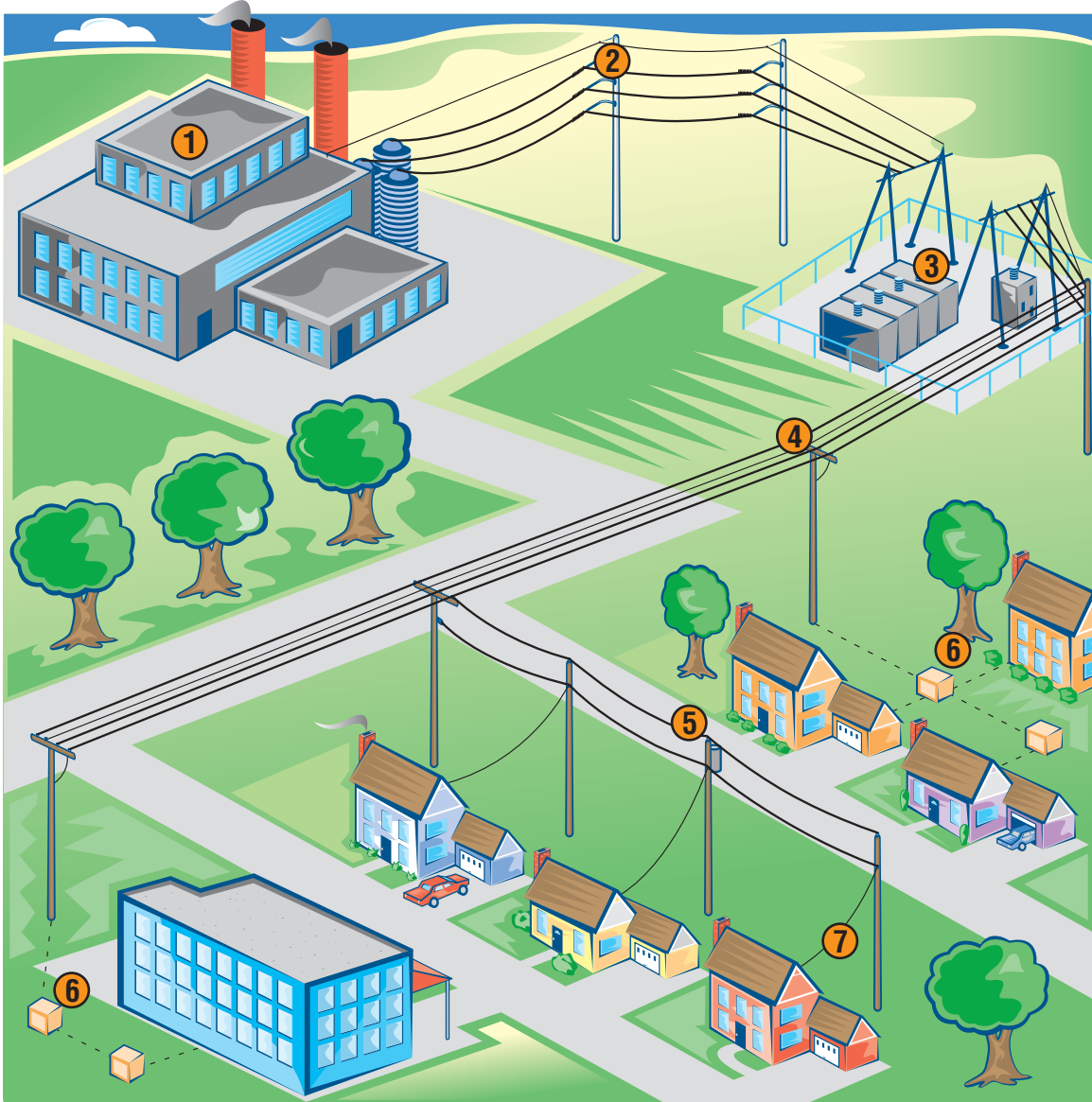


Driving the Growth with Dependable and Affordable Electricity



Power Delivery from the Kansas City Board of Public Utilities

- Reliable power delivery begins at the power plant ①, where electricity is generated.
- Power then is routed via transmission lines ② to community substations ③, from which it is distributed to main distribution lines ④ serving commercial and residential areas.
- These main distribution lines link to branch power lines ⑤, which connect to local transformers.
- These transformers ⑥ convert voltage to usable residential and commercial voltages.
- Power then is fed to individual service lines ⑦, where it is utilized by thousands of customers in area neighborhoods and businesses.

Reliability of BPU Power Delivery



Construction



Residents



Development

- BPU's power delivery system is designed so the vast majority of customers in the area will still receive power if any single generator or transmission line is lost.
- Our complete distribution system is designed and maintained to minimize outages to our customers.
- BPU locally owns and operates generation facilities, enabling us to deliver power more reliably and at a reduced cost to our customers.
- We deploy modern protective relays to isolate system disturbances and ensure continuous power to our customers.
- Lightning protection helps shield our delivery system from storm damage.
- Substation components are monitored with state-of-the-art technology to quickly identify potential problems.
- To meet growing demand, a new combustion turbine was installed in 2006.
- Ongoing load growth studies help us identify sites for substations, transmission lines and new plant generation.
- Advanced technology and management systems* are used to improve switching and monitoring operations, which provide enhanced service to our customers.
- BPU strictly follows guidelines dictated by the regional reliability coordinator of the Southwest Power Pool.

**Enhanced System Control and Data Acquisition (SCADA)*

