

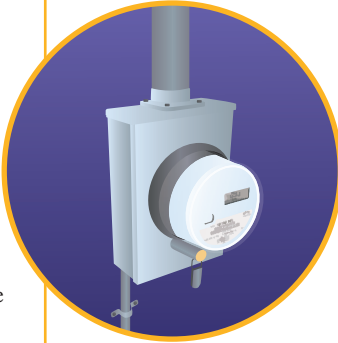
# ELECTRIC SERVICE CUSTOMER RESPONSIBILITIES



THE POWER OF COMMUNITY

Visit [bpu.com](http://bpu.com)  
for more info

**BPU IS RESPONSIBLE FOR THE SERVICE LINE AND METER ONLY.** Owner is responsible for all else, and must contract repairs with a licensed electrician before power can be restored.



**OWNER IS RESPONSIBLE FOR TRIMMING TREES** around the service line. BPU can lower the service line before you trim, just ask for our Line Drop Service at 913-573-9535.



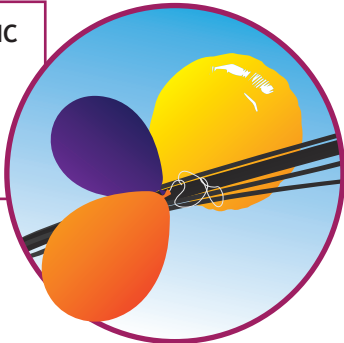
**TO HAVE ELECTRIC ISSUES REPAIRED** quickly and correctly, select from the menu options when calling the Electric Outage Line.



**AVOID TOUCHING POWER LINES** or poles with your body or any other objects.



**CALL ELECTRIC OUTAGE LINE** if you see an object on a power line or pole.



For electric issues/concerns:

**Call: 913-573-9522**

**!** BE SURE TO CHECK your fuse/breaker box before calling to report an outage.